

Evaluations

- 🏠 Teacher Evaluations
- 🏠 Principal Evaluations
- 🏠 School Improvement Plan
- 🏠 District Dashboard



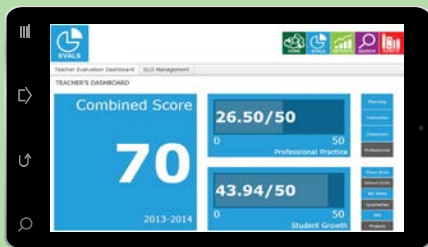
The Evaluations Hub is the most comprehensive Teacher and Principal Evaluation (TPE) System

Features

- 🏠 Automates the evaluations management process
- 🏠 Includes qualitative and quantitative evaluations
- 🏠 Supports many evaluation models, including Charlotte Danielson, James Stronge, and more
- 🏠 Allows state and district evaluation metrics
- 🏠 Automatically computes domain scores
- 🏠 Allows communication between teachers, principals, and district administrators



Teachers



- 🏠 View current evaluation score at any time
- 🏠 View score breakdown by professional practice and student growth domains
- 🏠 Drill down to specific domain
- 🏠 Drill down to the student
- 🏠 Communicate with principal

Schools



- 🏠 View evaluations of all teachers in the school
- 🏠 Differentiate between tenured and non-tenured teachers
- 🏠 Set up review meetings with teachers
- 🏠 Document comments and notes
- 🏠 Guide teachers in the evaluation process

Principals



- 🏠 View current score anytime
- 🏠 View score breakdown by professional practice and student growth domains
- 🏠 Drill down to specific domain
- 🏠 Communicate with the district administrator



TEAMS – The Evaluations & Assets Management System

Student Learning Objectives (SLOs)



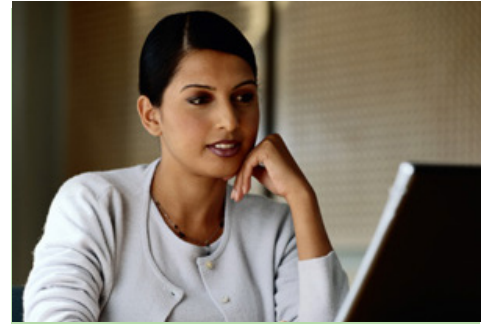
- ☛ Create, manage, and submit SLOs
- ☛ Set up and manage student cohorts
- ☛ Set up evaluation metrics
- ☛ Review SLO with principal
- ☛ System calculates SLO result

School Improvement Plans (SIPs)



- ☛ Create, manage, and submit SIPs
- ☛ System calculates SIP result
- ☛ View SIP history
- ☛ Review SIP with district administrator
- ☛ Publish SIP for use by other schools

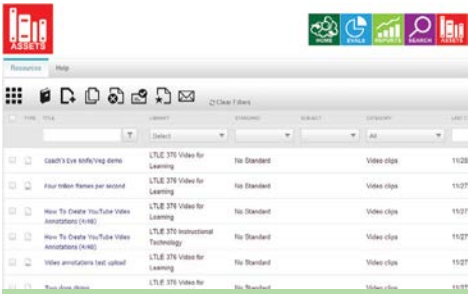
Audit and History



- ☛ Complete audit capabilities
- ☛ View thorough and descriptive tracked changes
- ☛ All comments and notes are stored
- ☛ All review meetings are stored
- ☛ View history of all elements of the evaluation

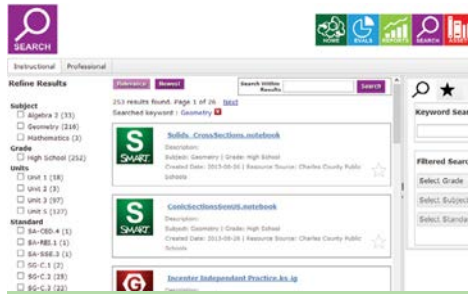
TEAMS Hubs

Assets



- ☛ Create, harvest instructional resources
- ☛ Align to Common Core, State and Local Standards
- ☛ Review, approve and publish resources
- ☛ Share resources with teachers, schools, districts in network

Search



- ☛ Find all approved content quickly and seamlessly from a single user friendly search engine
- ☛ Filter results by keyword, grade level, subject area, and standard
- ☛ Tag and organize search results into personal or shared resource groups
- ☛ Create customized electronic pacing guides

Reports



- ☛ View top rated, last accessed, and favorite reports
- ☛ Filters by school, grade level, school year, demographics, and even for individual students where permitted
- ☛ Export and share results
- ☛ Graphical and tabular data views for each report

Technical and Security Details

- TEAMS is a fully web based system hosted in the cloud and available via the Internet using any supported web browser
- TEAMS is fully secure. It features multiple levels of security and all communication is done through secure sockets layer (SSL)
- Instructional content created in TEAMS can be stored in common cartridge format providing easy interoperability with other systems
- The search engine is developed using Solr, which has a sophisticated crawler and indexer
- All content stored in TEAMS is owned by the respective Authors and shared through Creative Commons licensing model

Powered by



Contact us to learn more about TEAMS and to successfully complete the TPE process
www.teams-hub.com | sales@teams-hub.com | 703-657-0472

